



NEXT ADVANTAGE ,TRADING TERMINAL

User Manual – Getting Started

Table of Contents

TRADING TERMINAL	I
1 ABOUT THIS DOCUMENT.....	6
1.1 Document Composition.....	6
2 INTRODUCTION	7
3 GETTING STARTED.....	8
3.1 Login	8
3.1.1 Login Window	8
3.1.2 Server not Connected.....	9
3.1.3 Invalid User Id / Password.....	9
3.1.4 User Not Configured	9
3.2 Application Startup.....	10
3.3 File Menu.....	11
3.3.1 Trade Log (Ctrl + D)	11
3.3.2 Messages (Ctrl + G).....	11
3.3.3 Exit (Ctrl + X).....	12
3.4 View Menu	13
3.4.1 Market Watch (F12)	13
3.4.2 Waterfall Ticker (Ctrl + W).....	14
3.4.3 Time of Sale (Ctrl + S)	15
3.4.4 Exchange Watch (Ctrl + E).....	16
3.4.5 Message Board	17
3.4.6 Price Alert.....	18
3.5 Order Menu	19
3.5.1 Buy Order (F4)	19
3.5.2 Sell Order (F5).....	20
3.5.3 Modify Order (F9).....	21
3.5.4 Cancel Order (F11).....	23
3.5.5 Outstanding Orders (Ctrl + O)	25
3.5.6 Outstanding Orders Summary (Ctrl + U)	26
3.6 Trading Menu	27
3.6.1 Transaction List (Ctrl + R)	27
3.6.2 Transaction Summary (Ctrl + Y).....	28
3.6.3 Delivery Request (Ctrl + Q)	29
3.7 Graph Menu.....	30
3.7.1 Stock Graph (Ctrl + K)	30
3.7.2 Index Graph (Ctrl + I).....	31
3.8 Account Status Menu.....	32
3.8.1 Client Portfolio (Ctrl + F)	32
3.9 Reports Menu	33
3.9.1 Net Custody Position	33
3.9.2 Daily Trade Confirmation.....	34
3.9.3 Periodic Trade Summary	35
3.10 Setting Menu	36
3.10.1 Change Password (Ctrl + P)	36
3.10.2 Price Alerts (Ctrl + A)	37
3.10.3 Symbol Listing (F3).....	38

3.11	Customizing the application	39
3.11.1	Color Selection	39
3.11.2	Font Selection	40

Table of Figures

Figure 1: Login Window.....	8
Figure 2: Connection Failed	9
Figure 3: Login Failed.....	9
Figure 4: Invalid User	9
Figure 5: Main Application Window	10
Figure 6: Trade Log File	11
Figure 7: Messages File	12
Figure 8: Market Watch	13
Figure 9: Waterfall Ticker	14
Figure 10: Time of Sale	15
Figure 11: Exchange Watch	16
Figure 12: Message Board	17
Figure 13: Price Alert.....	18
Figure 14: Buy Order	19
Figure 15: Sell Order	20
Figure 16: Order Selection for Modification.....	21
Figure 17: Modify Order.....	22
Figure 18: Order Selection for Cancellation	23
Figure 19: Cancel Order	24
Figure 20: Outstanding Orders.....	25
Figure 21: Outstanding Orders Summary	26
Figure 22: Transaction List.....	27
Figure 23: Transaction Summary	28
Figure 24: Delivery Request.....	29
Figure 25: Stock Graph	30
Figure 26: Index Graph.....	31
Figure 27: Current Portfolio	32
Figure 28: Client Account Ledger.....	Error! Bookmark not defined.
Figure 29: Net Custody Position.....	33
Figure 30: Daily Trade Confirmation	34
Figure 31: Periodic Trade Summary.....	35
Figure 32: Change Password.....	36
Figure 33: Price Alert Settings.....	37
Figure 34: Symbol Listing	38
Figure 35: Symbol Selection.....	Error! Bookmark not defined.
Figure 36: Column Selection	Error! Bookmark not defined.
Figure 37: Color Selection	39
Figure 38: Font Selection	40

1 About this document

This document is about the features and functionality of Trading Terminal through which a user can place orders and view current market statistics in real time. It intends to guide the user of the application about all views and windows available so that he/she can use it effectively. The document discusses different types of views available in the application as well as different customisation options to customize these views according to user preferences.

1.1 Document Composition

The document contains different sections that explain different menu groups of the application. Starting from File menu, it explains View, Order, Trading, Graph, Account Status, Reports and Setting menu options. Different customisation options available for views are also explained.

2 Introduction

Trading Terminal is an online trading application that offers the ability to buy and sell shares and view real time stock information. On start up, Trading Terminal gets connected with the Trading Server that is connected with the trading engine and facilitates communication between Trading Terminal and trading engine. Terminal offers a variety of different useful menu options that facilitate sale/purchase of shares and manage client information efficiently.

Trading Terminal provides following advanced features:

Current market statistics for different stocks and exchange statistics are provided through a number of views e.g. Market Watch, Waterfall Ticker, Exchange Watch and Time of Sale etc.

Outstanding Orders and Transaction List views are maintained which keep record of all pending orders and executed trades respectively. A file is also maintained keeping record of all of the current day trades.

Buy, Sell orders can be placed and users can also modify/cancel their pending orders. Client margin is checked in real time during order entry, taking into account the client's executed trades and pending orders.

Client can view his/her current clearing portfolio and different reports are also provided to show custody positions and day trades.

Advanced charting module is provided containing Stock and Index graphs.

All of the views can be customized according to user preferences and the customisations persist even after exiting from the application and are restored on start up.

3 GETTING STARTED

By default, Trading Terminal is installed in Start Menu -> Programs -> BackConnect -> Trading Terminal folder of start menu. So Trading Terminal can be started by clicking **Start Menu -> Programs -> BackConnect -> Trading Terminal -> Trading Terminal. Configuration** option in the same menu contains some configuration parameters that are appropriate when application is installed but can be modified later if required.

3.1 Login

3.1.1 Login Window

Each application user is provided with a unique user name and password. Each user has a particular user type that determines the level of access the user has to the application. There are different types of users.

Client user has full access to all of the views and screens.

Subscriber user has limited access to the application. Order related views and functionality is not available for this type of user while all other market statistic views are available.

For application login,

Enter user ID in the **User Id** field.

Enter password in the **Password** field.

Press the ENTER key or click **OK** button.



Figure 1: Login Window

Clicking **Cancel** button asks to exit from the application and will exit on selecting **Yes**.

3.1.2 Server not Connected

First of all, Terminal tries to connect with the Trading Server. In case, it fails to connect with the Server, following message appears. The connection may fail due to having temporary Server shutdown or some communication link failure. On successful connection with the server, User Id and password is verified.

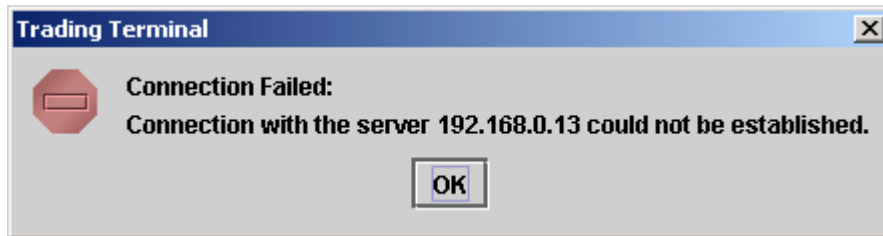


Figure 2: Connection Failed

3.1.3 Invalid User Id / Password

In case of invalid User Id or password, following message appears stating that either user id or password is not correct.

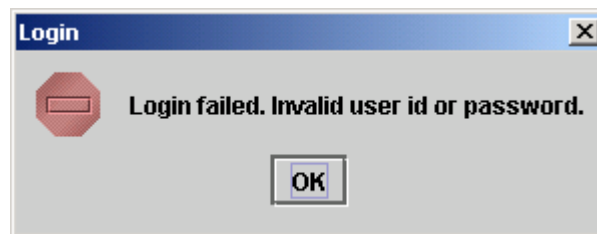


Figure 3: Login Failed

3.1.4 User Not Configured

In case when a user is not allowed to use Trading Terminal application, following message appears stating that the user has not been configured to use the application.

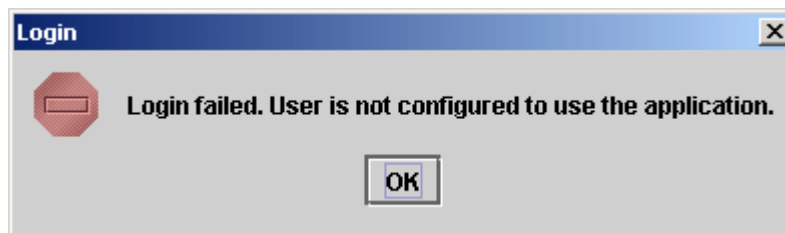


Figure 4: Invalid User

3.2 Application Startup

After successful login, following screen appears.

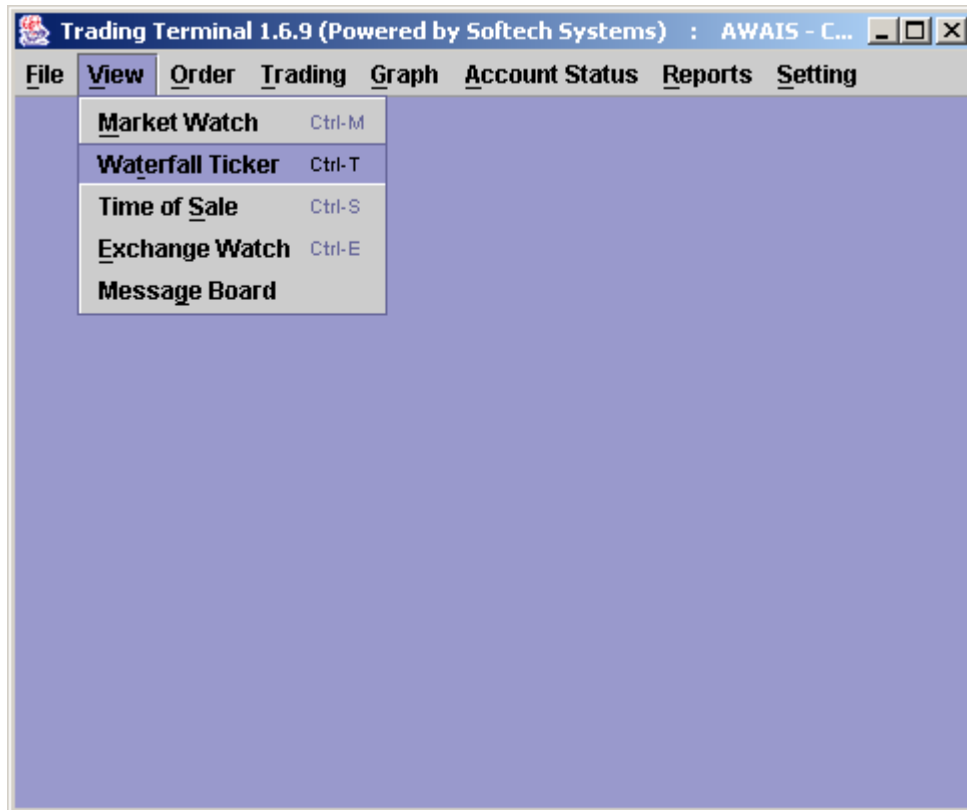


Figure 5: Main Application Window

3.3 File Menu

3.3.1 Trade Log (Ctrl + D)

During the market sessions, executed trades of the user are saved in a file that can be viewed by using Trade Log option. After opening the trade log file, these trades can be printed. A new file is generated daily and maintained for all of the day trades.

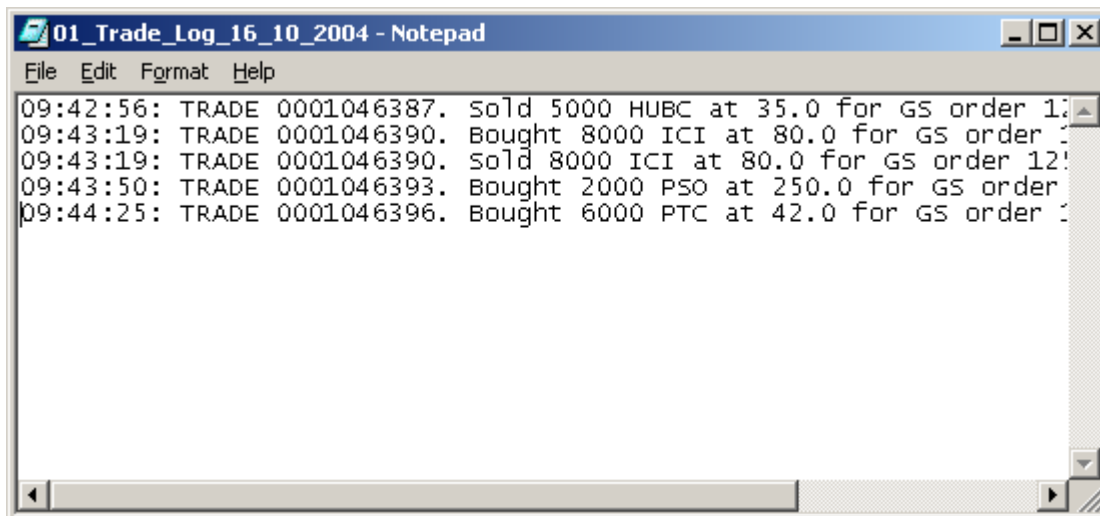
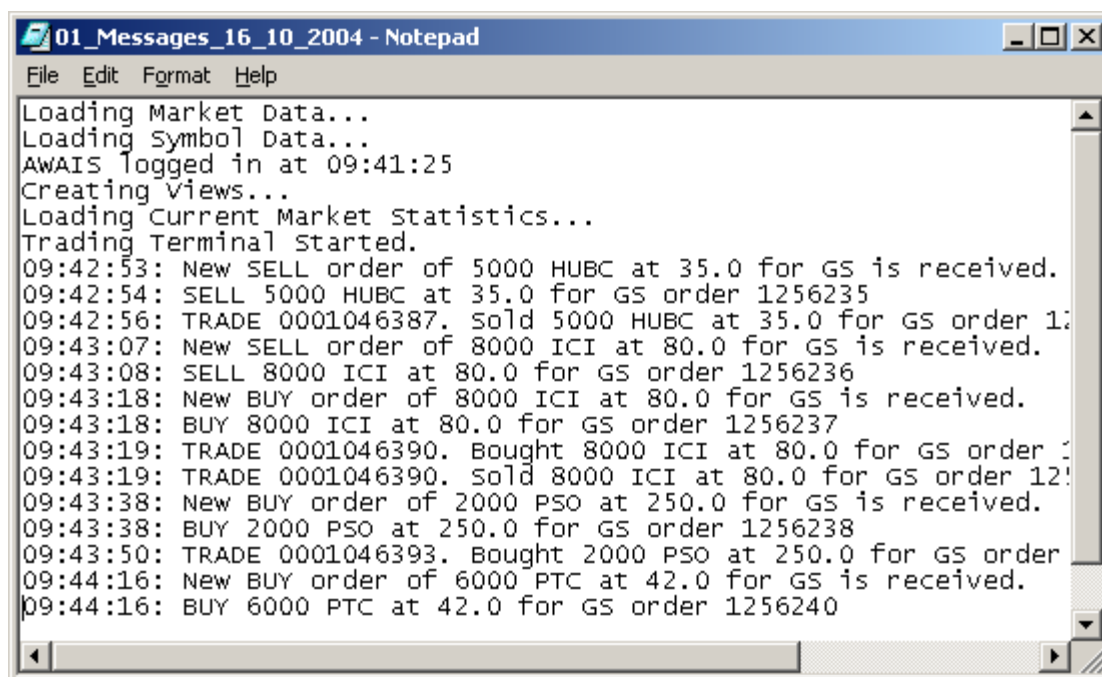


Figure 6: Trade Log File

3.3.2 Messages (Ctrl + G)

During each application session, Message Board (see section 3.4.5) shows different types of messages intended for the user. The messages might include login confirmations, order entry confirmations, executed trade confirmations, password change confirmations etc. In addition to showing these messages on Message Board, these are also saved in a messages file. The file contains messages for current session only and can be viewed by using Messages option in the file menu. After opening the Messages file, these messages can also be printed.



```
01_Messages_16_10_2004 - Notepad
File Edit Format Help
Loading Market Data...
Loading Symbol Data...
AWAIS logged in at 09:41:25
Creating Views...
Loading Current Market Statistics...
Trading Terminal started.
09:42:53: New SELL order of 5000 HUBC at 35.0 for GS is received.
09:42:54: SELL 5000 HUBC at 35.0 for GS order 1256235
09:42:56: TRADE 0001046387. sold 5000 HUBC at 35.0 for GS order 1256235
09:43:07: New SELL order of 8000 ICI at 80.0 for GS is received.
09:43:08: SELL 8000 ICI at 80.0 for GS order 1256236
09:43:18: New BUY order of 8000 ICI at 80.0 for GS is received.
09:43:18: BUY 8000 ICI at 80.0 for GS order 1256237
09:43:19: TRADE 0001046390. Bought 8000 ICI at 80.0 for GS order 1256237
09:43:19: TRADE 0001046390. sold 8000 ICI at 80.0 for GS order 1256237
09:43:38: New BUY order of 2000 PSO at 250.0 for GS is received.
09:43:38: BUY 2000 PSO at 250.0 for GS order 1256238
09:43:50: TRADE 0001046393. Bought 2000 PSO at 250.0 for GS order 1256238
09:44:16: New BUY order of 6000 PTC at 42.0 for GS is received.
09:44:16: BUY 6000 PTC at 42.0 for GS order 1256240
```

Figure 7: Messages File

3.3.3 Exit (Ctrl + X)

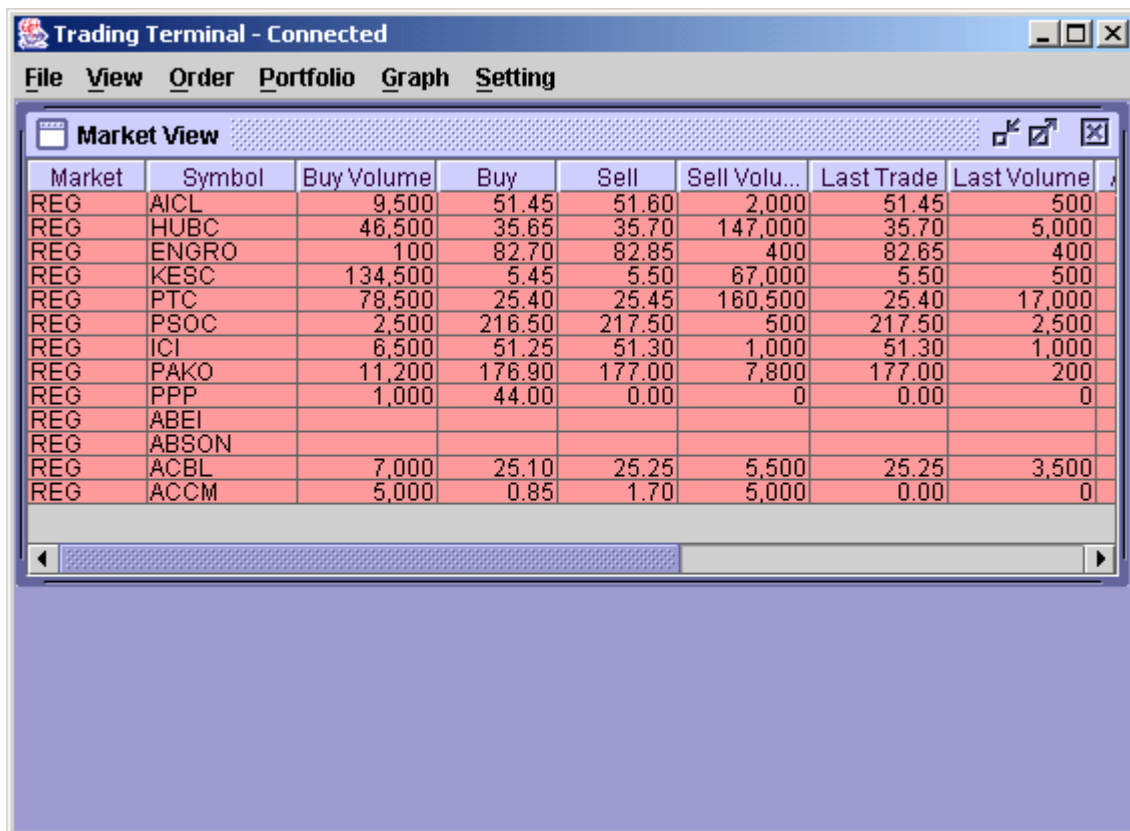
User can exit from the application by selecting exit option. Before exit, it saves current application settings for different views and these settings are restored next time the application is started.

3.4 View Menu

Most of the views are stock feed based and have similar customisation options. User can choose symbols to be shown in the view. User can select different columns to be shown on the view from a list of columns and can also arrange these columns in some desired order. Different colors for view background, foreground etc., fonts and font sizes are also customisable. User's current settings for different view attributes, layout and positioning are saved on application exit and persist even after application has been closed. These settings are restored next time application is started.

3.4.1 Market Watch (F12)

Market Watch shows current buy and sell market positions for each symbol. Each row shows current market statistics for a particular symbol in a particular market. Different customisation options can be selected from the popup menu that appears on right clicking the view.



The screenshot shows a window titled "Trading Terminal - Connected" with a menu bar containing "File", "View", "Order", "Portfolio", "Graph", and "Setting". The main area displays a "Market View" table with the following data:

Market	Symbol	Buy Volume	Buy	Sell	Sell Volume	Last Trade	Last Volume
REG	AICL	9,500	51.45	51.60	2,000	51.45	500
REG	HUBC	46,500	35.65	35.70	147,000	35.70	5,000
REG	ENGRO	100	82.70	82.85	400	82.65	400
REG	KESC	134,500	5.45	5.50	67,000	5.50	500
REG	PTC	78,500	25.40	25.45	160,500	25.40	17,000
REG	PSOC	2,500	216.50	217.50	500	217.50	2,500
REG	ICI	6,500	51.25	51.30	1,000	51.30	1,000
REG	PAKO	11,200	176.90	177.00	7,800	177.00	200
REG	PPP	1,000	44.00	0.00	0	0.00	0
REG	ABEI						
REG	ABSON						
REG	ACBL	7,000	25.10	25.25	5,500	25.25	3,500
REG	ACCM	5,000	0.85	1.70	5,000	0.00	0

Figure 8: Market Watch

3.4.2 Waterfall Ticker (Ctrl + W)

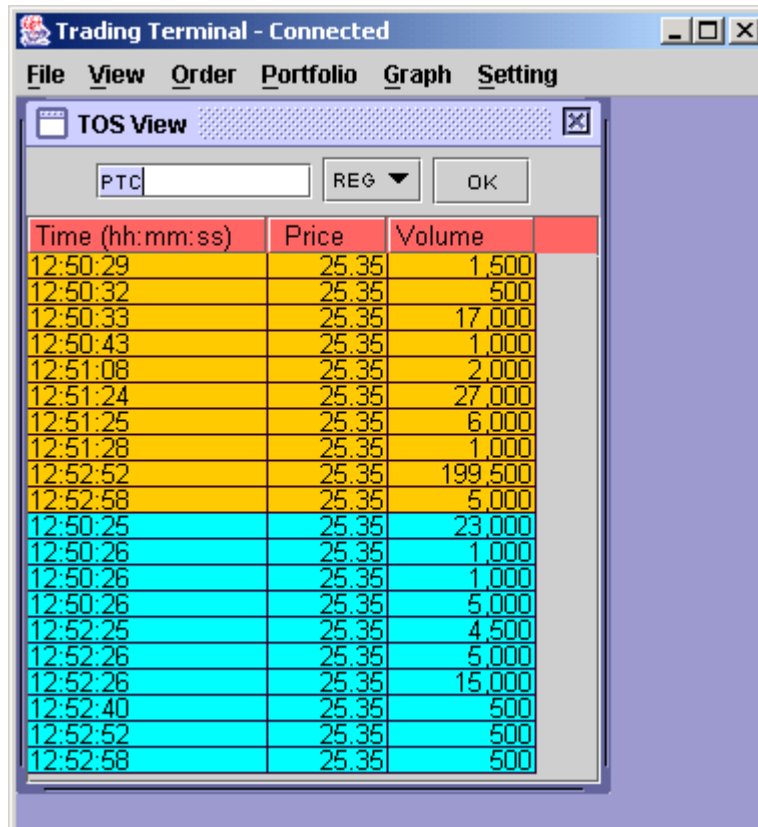
Waterfall Ticker also shows current buy/sell market positions and trades for selected symbols but it presents these positions in a different format than Market Watch. Here each new record is shown in a new row with a different color than the earlier record and overwrites the already written records. Different customisation options can be selected from the popup menu that appears on right clicking the view.

Market	Symbol	Buy	Buy Volume	Sell	Sell Volume	Last Trade	Last Volume
REG	HUBC	35.60	254,500	35.65	15,500		
REG	HUBC	35.60	252,500	35.65	21,000		
REG	ENGRO	82.65	800	82.70	800		
REG	HUBC					35.65	10,000
REG	ENGRO					82.70	500
REG	HUBC	35.60	242,500	35.65	21,500		
REG	HUBC	35.60	227,500	35.65	21,500		
REG	PTC	25.35	65,000	25.40	203,000		
REG	HUBC	35.60	259,000	35.65	23,500		
REG	ENGRO	82.65	800	82.70	1,300		
REG	HUBC					35.65	10,000
REG	ENGRO					82.70	200
REG	HUBC	35.60	259,000	35.65	25,500		
REG	AICL	51.40	500	51.45	1,000		
REG	HUBC	35.60	255,000	35.65	25,500		
REG	HUBC	35.60	254,500	35.65	25,500		
REG	HUBC					35.60	500

Figure 9: Waterfall Ticker

3.4.3 Time of Sale (Ctrl + T)

Time of Sale is useful to observe closely the changing market situation for a stock. It is similar to waterfall ticker in its representation. The difference is that it is displaying trades of the selected scrip along with the time stamp of the trade.

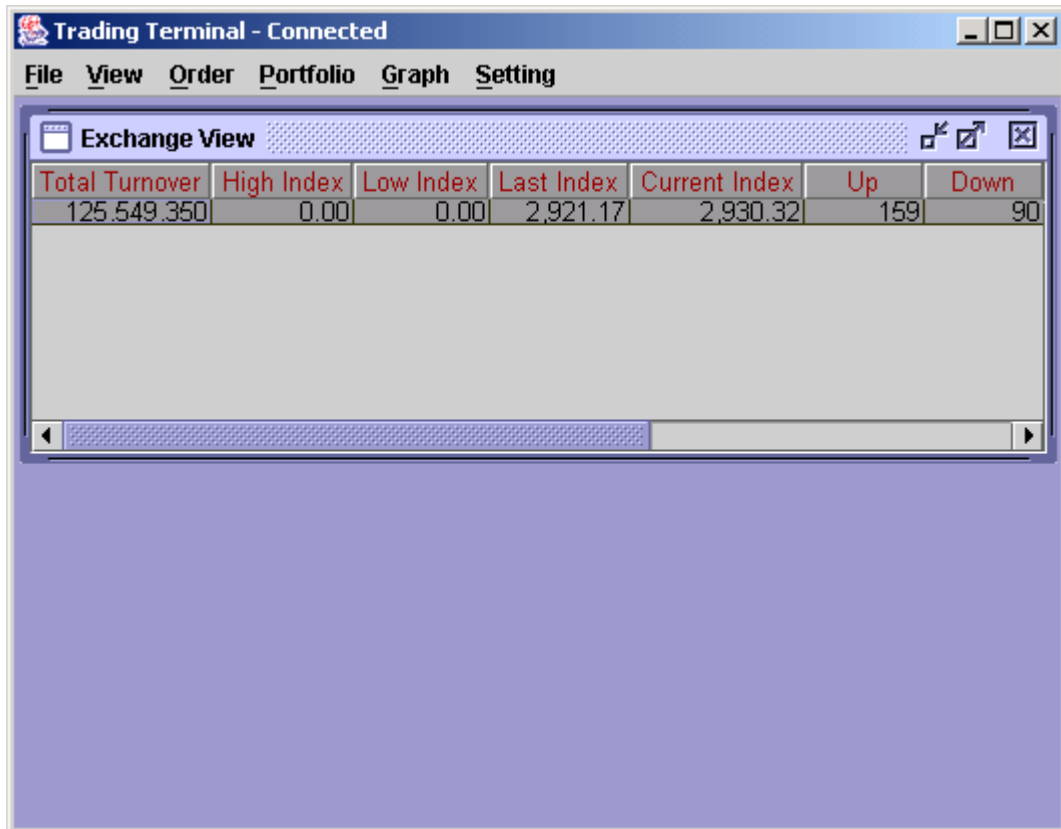


Time (hh:mm:ss)	Price	Volume
12:50:29	25.35	1,500
12:50:32	25.35	500
12:50:33	25.35	17,000
12:50:43	25.35	1,000
12:51:08	25.35	2,000
12:51:24	25.35	27,000
12:51:25	25.35	6,000
12:51:28	25.35	1,000
12:52:52	25.35	199,500
12:52:58	25.35	5,000
12:50:25	25.35	23,000
12:50:26	25.35	1,000
12:50:26	25.35	1,000
12:50:26	25.35	5,000
12:52:25	25.35	4,500
12:52:26	25.35	5,000
12:52:26	25.35	15,000
12:52:40	25.35	500
12:52:52	25.35	500
12:52:58	25.35	500

Figure 10: Time of Sale

3.4.4 Exchange Watch (Ctrl + E)

This view displays different stock exchange statistics and contains only a single row. Different columns in the row are updated with the change in corresponding column's value. Different customisation options can be selected from the popup menu that appears on right clicking the view.



Total Turnover	High Index	Low Index	Last Index	Current Index	Up	Down
125,549.350	0.00	0.00	2,921.17	2,930.32	159	90

Figure 11: Exchange Watch

3.4.5 Message Board

Message Board provides an interface through which user is kept aware of different events happening in the system. Whenever a user places some order or modifies/cancels an existing order, Message Board shows different messages regarding the status of these orders. Similarly when an order gets executed, a trade confirmation appears on the Message Board. Moreover different types of messages are shown in different colors so that they can be identified easily. These messages are also saved in a messages file that can be viewed by using Messages option in File menu (see section 3.3.2). Message Board is made visible automatically at the start of the application. Afterwards, if it is closed, it reopens whenever a new message arrives or can be opened from Message Board option in View menu.

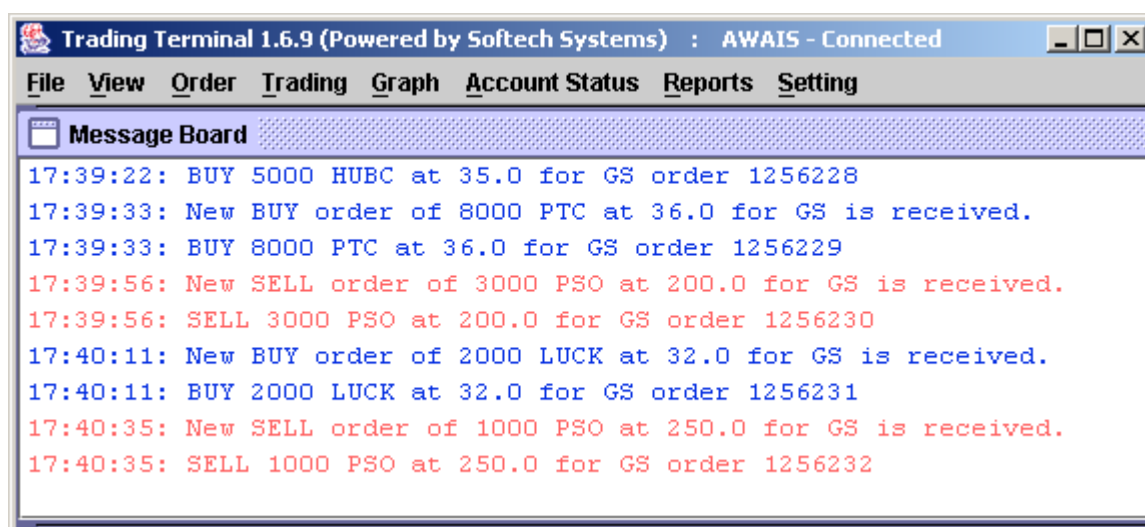


Figure 12: Message Board

3.4.6 Price Alert

Price Alert provides alarming notifications to the user whenever the price of certain symbols crosses certain upper and lower limits. These upper and lower limit values can be defined by the user through Price Alerts setting option (see section 3.10.2). Price Alert does not appear in menu and is displayed automatically as soon as any symbol price crosses limits defined by the user and never appears if no such limits have been defined. Price Alert appears on top of all other views and in upper left corner of the application main window.

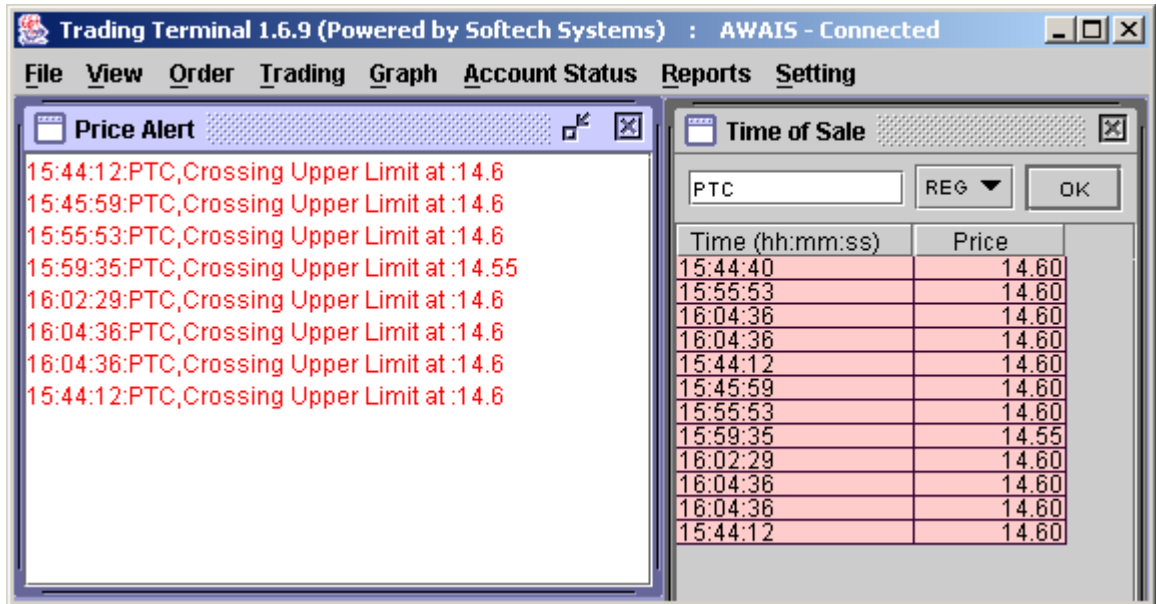


Figure 13: Price Alert

3.5 Order Menu

A user can place purchase / sale orders through order entry windows and can also modify and cancel already placed orders which have not been traded yet. Order windows also show current market position for the selected market and symbol. Order windows are like user input screens and do not have any customisation options available, although position of the order window is saved on exiting the application and restored next time.

3.5.1 Buy Order (F4)

User can place buy orders through this window, which also shows the best market and last trade price etc. for the selected market and symbol.

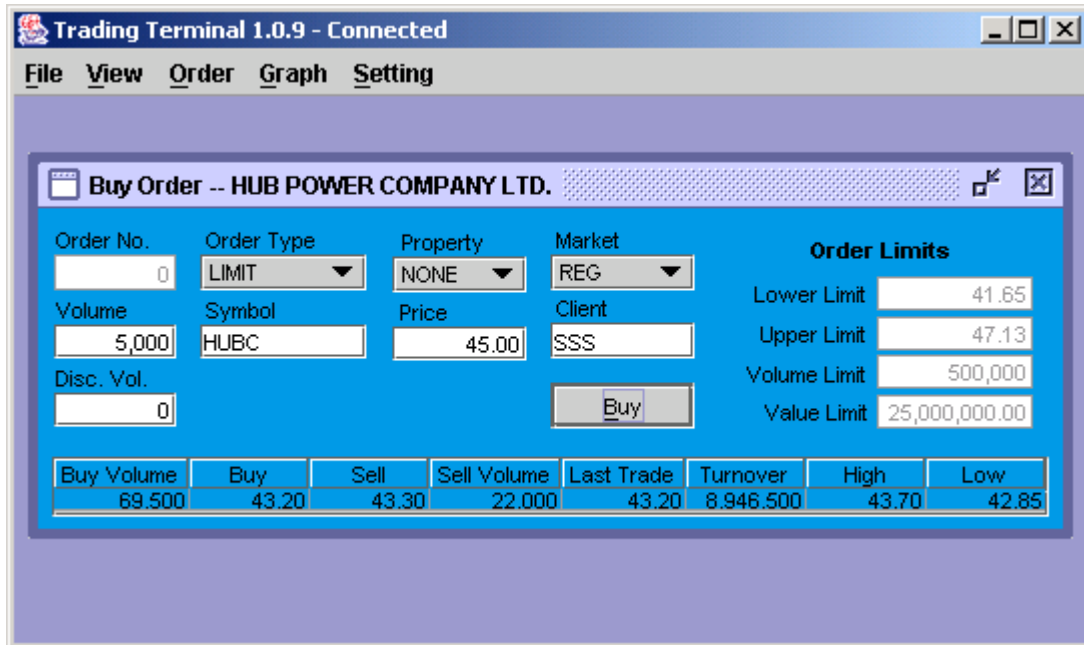


Figure 14: Buy Order

3.5.2 Sell Order (F5)

User can place sell orders through this window, which also shows the best market and last trade price etc. for the selected market and symbol.

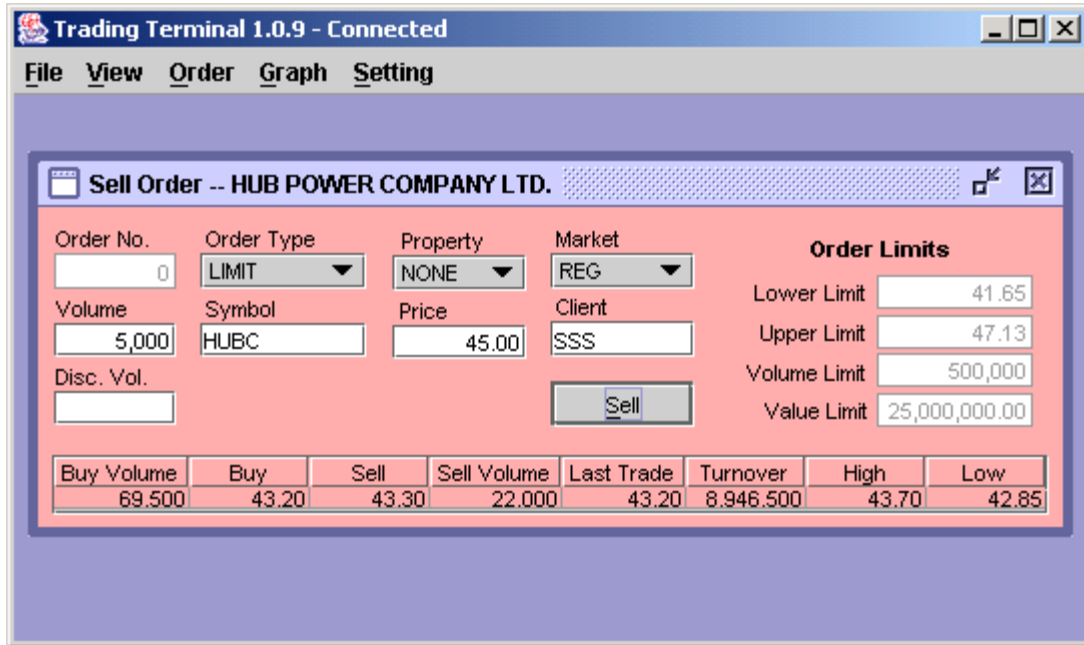


Figure 15: Sell Order

3.5.3 Modify Order (F9)

Order modification can be carried out by selecting the order (to be modified) from Outstanding orders view (see section 3.5.5) by left clicking the order and then selecting the Modify Order option from the popup menu that appears on right clicking the selected order. On clicking the Modify Order option in the popup menu, selected order is opened automatically in the Modify Order window where it can be modified and sent to the Trading Server.

Alternatively, Modify Order window can be opened from the Orders menu to modify the order. Order number (for the order to be modified) is entered in the Order Number field and enter key is pressed. On pressing enter, modify order window is populated with the order that can now be modified.

Only Volume, Price and Trigger Price entries for the order can be modified and hence are editable. All other fields appear as read only in the Modify Order window. The order will be modified only if it has not been traded yet. After successful modification, order is updated in the outstanding orders view.

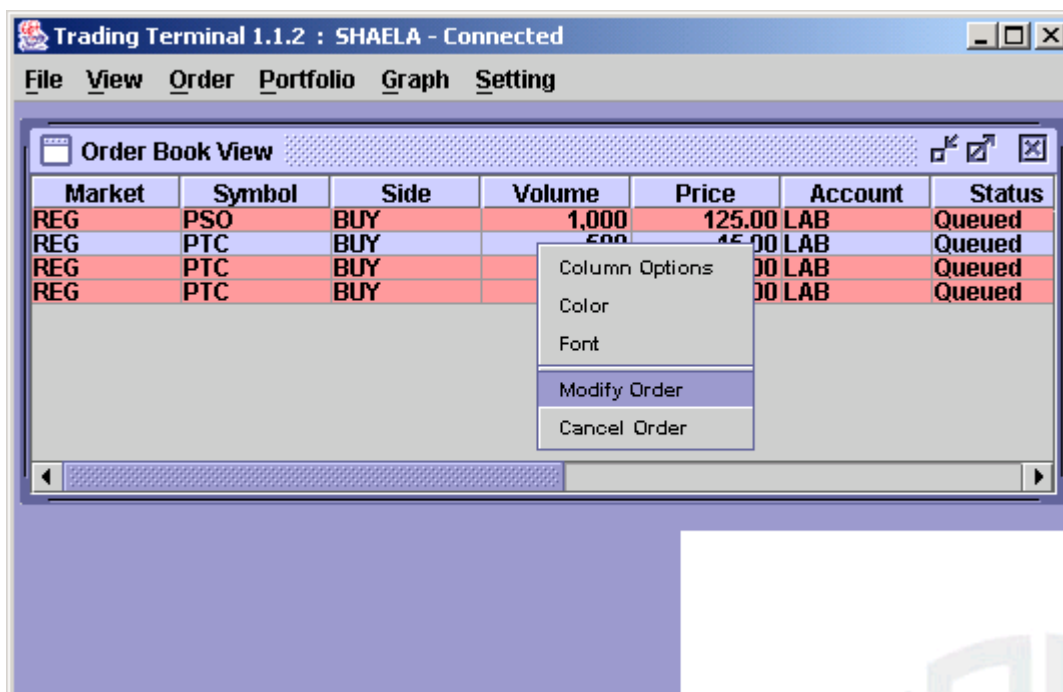


Figure 16: Order Selection for Modification

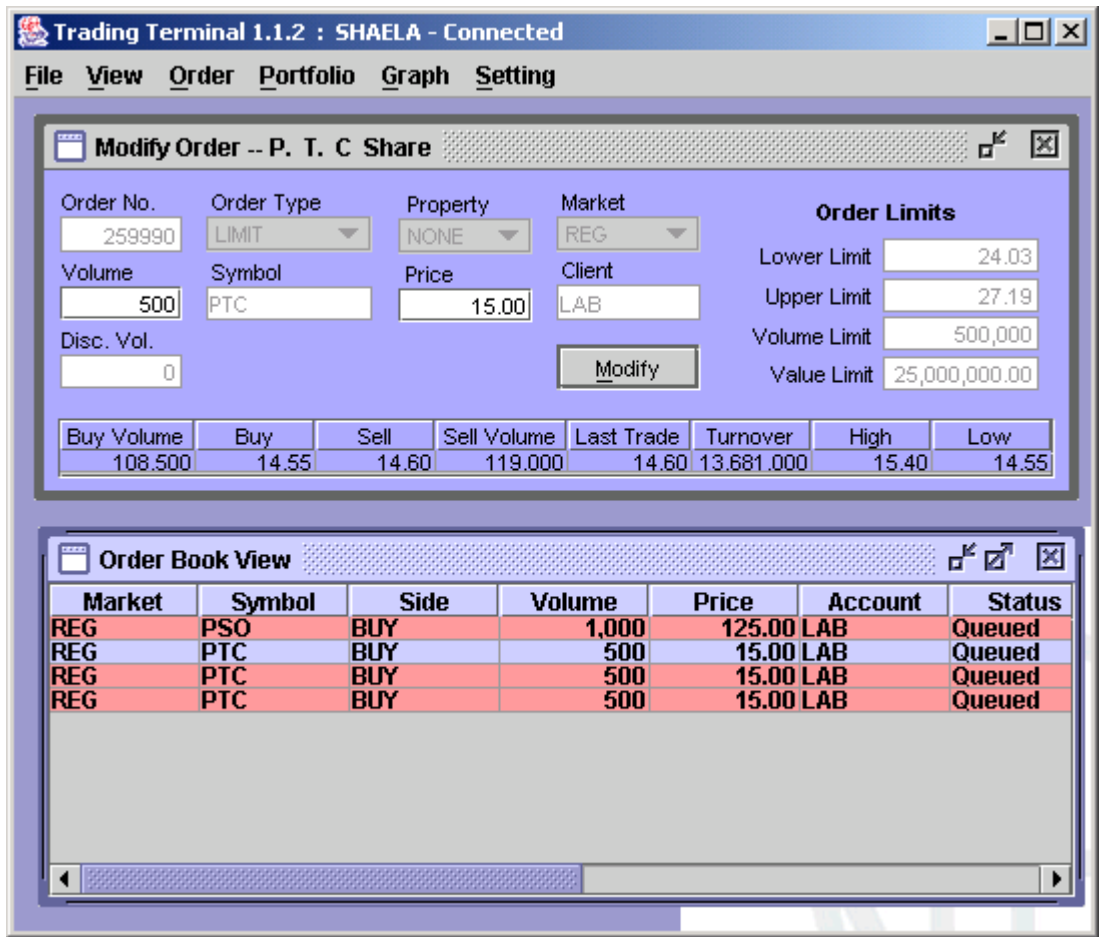


Figure 17: Modify Order

3.5.4 Cancel Order (F11)

Order cancellation can be carried out by selecting the order (to be cancelled) from Outstanding orders view (see section 3.5.5) by left clicking the order and then selecting the Cancel Order option from the popup menu that appears on right clicking the selected order. On clicking the Cancel Order option in the popup menu, the selected order is opened automatically in the Cancel Order window where it can be cancelled.

Alternatively, Cancel Order window can be opened from the Orders menu to cancel the order. Order number (for the order to be cancelled) is entered in the Order Number field and enter key is pressed. On pressing enter, cancel order window is populated with the order that can now be cancelled.

All of the order fields appear as read only in the Cancel Order window. The order will be cancelled only if it has not been traded yet. After successful cancellation, order disappears from the outstanding orders view.

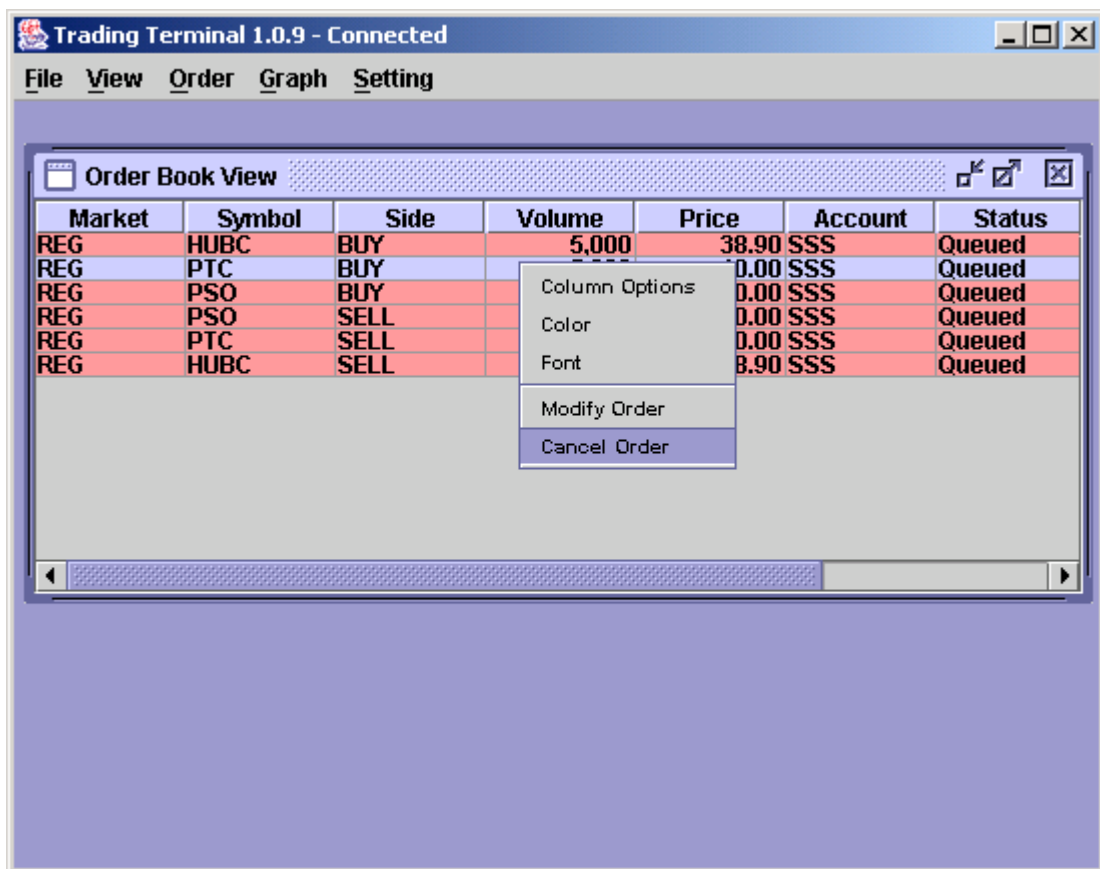


Figure 18: Order Selection for Cancellation

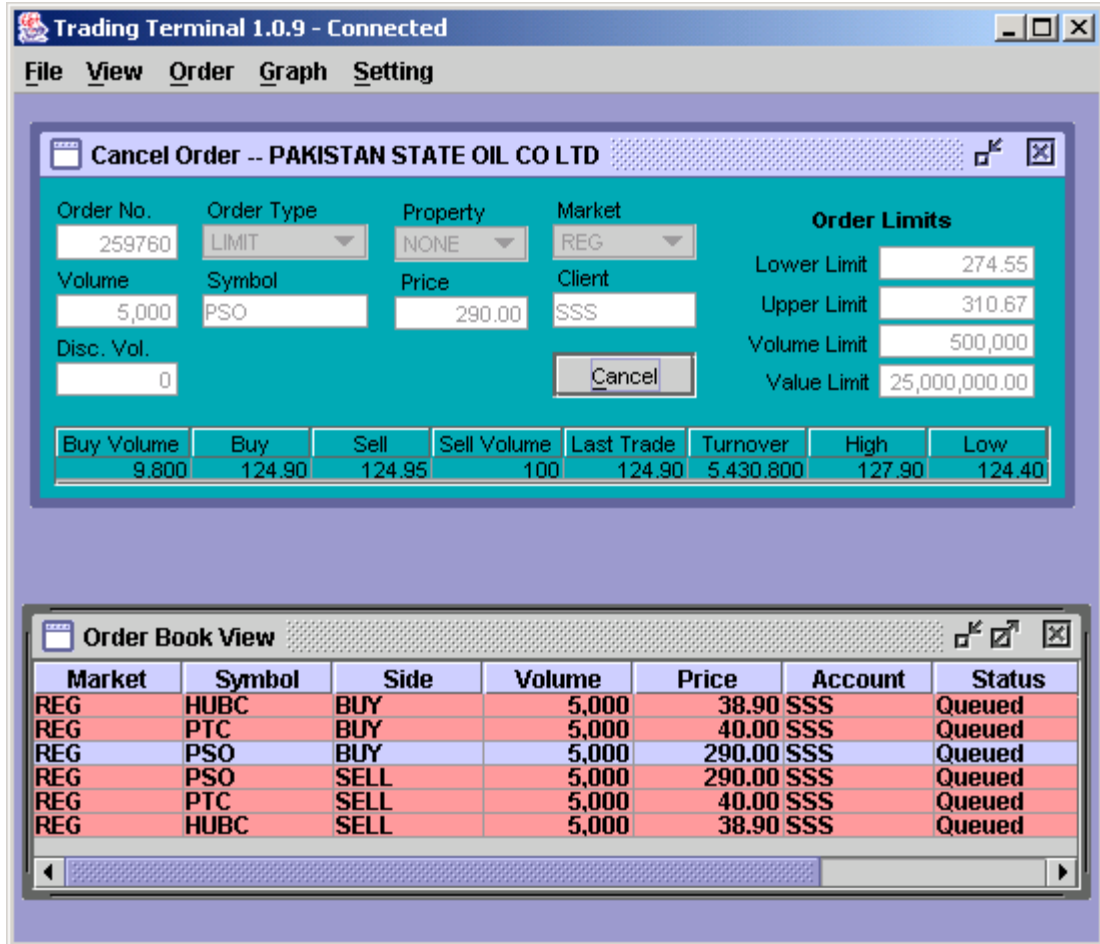
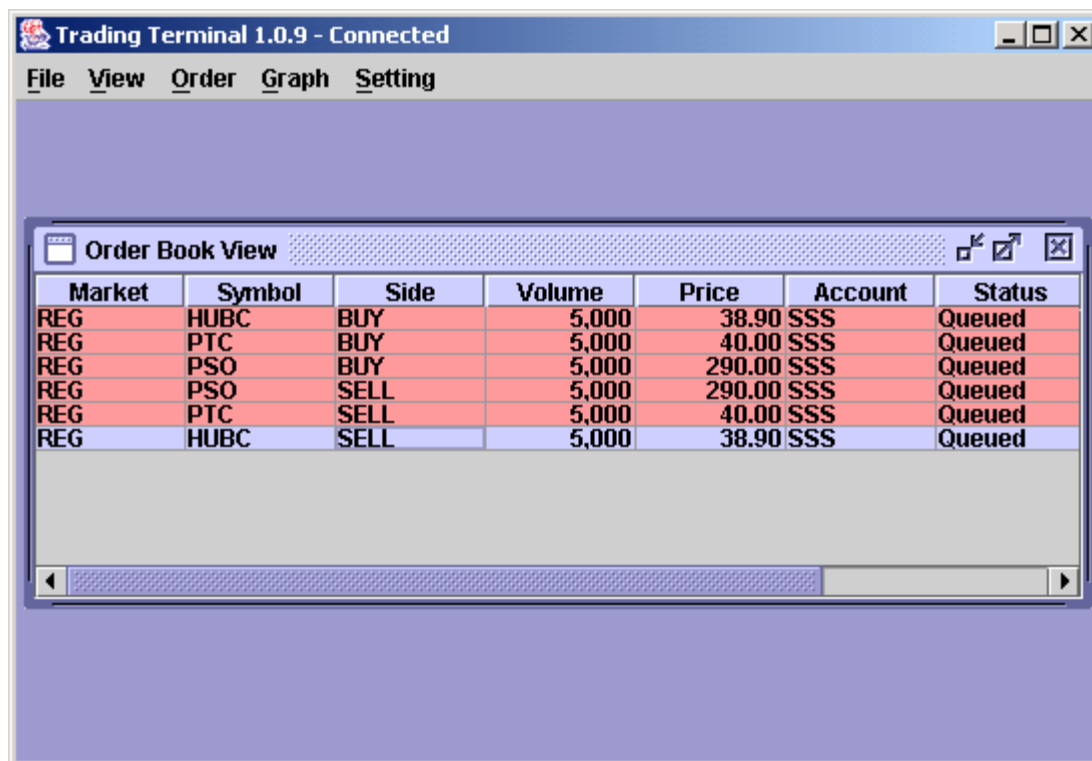


Figure 19: Cancel Order

3.5.5 Outstanding Orders (Ctrl + O)

This view keeps record of all of the orders of the user that are still outstanding and have not been traded yet. Whenever a new order is placed, it appears in the outstanding orders view and remains there as long as it is not traded. Buy and Sell orders appear in different colors in the view and from here they can be selected for modification or cancellation. When an order is cancelled or it gets traded fully, it disappears from the outstanding orders view. When an order is modified or gets traded partially, it is updated in the outstanding orders view. Different customisation options can be selected from the popup menu that appears on right clicking the view.



Market	Symbol	Side	Volume	Price	Account	Status
REG	HUBC	BUY	5,000	38.90	SSS	Queued
REG	PTC	BUY	5,000	40.00	SSS	Queued
REG	PSO	BUY	5,000	290.00	SSS	Queued
REG	PSO	SELL	5,000	290.00	SSS	Queued
REG	PTC	SELL	5,000	40.00	SSS	Queued
REG	HUBC	SELL	5,000	38.90	SSS	Queued

Figure 20: Outstanding Orders

3.5.6 Outstanding Orders Summary (Ctrl + U)

This view shows a summary of all outstanding orders of the user that have not been traded yet. All outstanding orders are shown in order of symbol and side (buy/sell) and at the end of each symbol a summary shows the total buy and sell volume and amount of outstanding orders in that particular symbol. This summary can be viewed for a particular symbol or for all symbols (if no symbol is specified). Different customisation options can be selected from the popup menu that appears on right clicking the view.

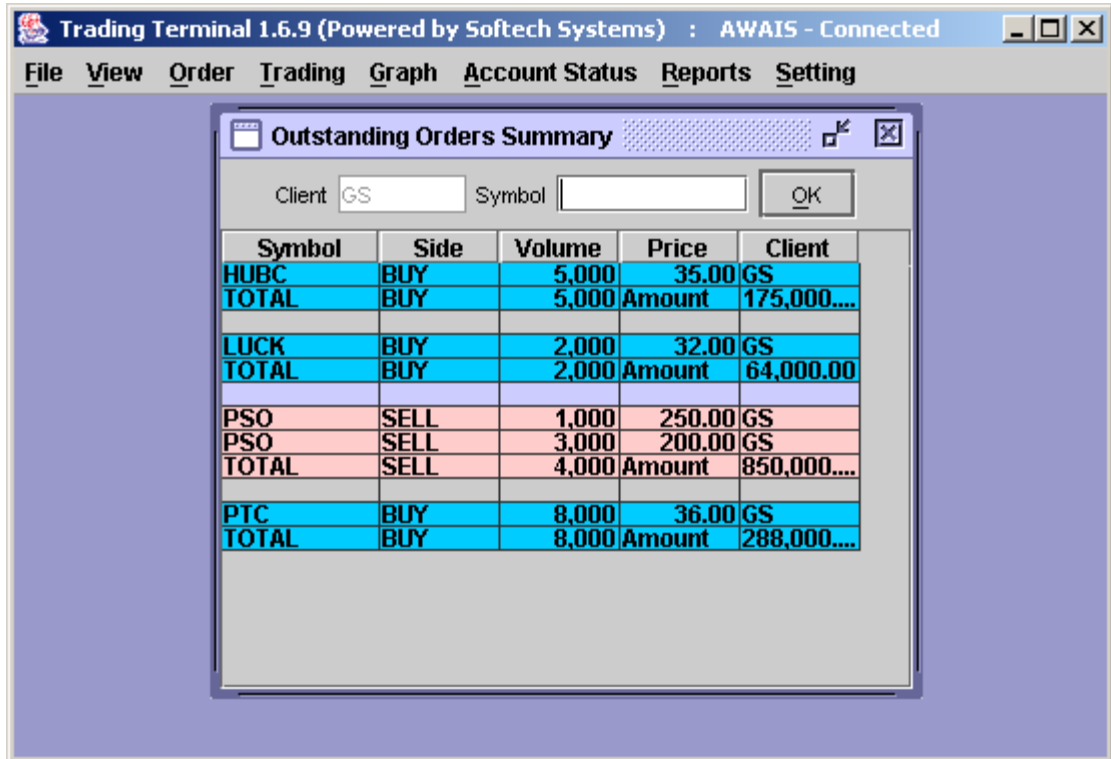


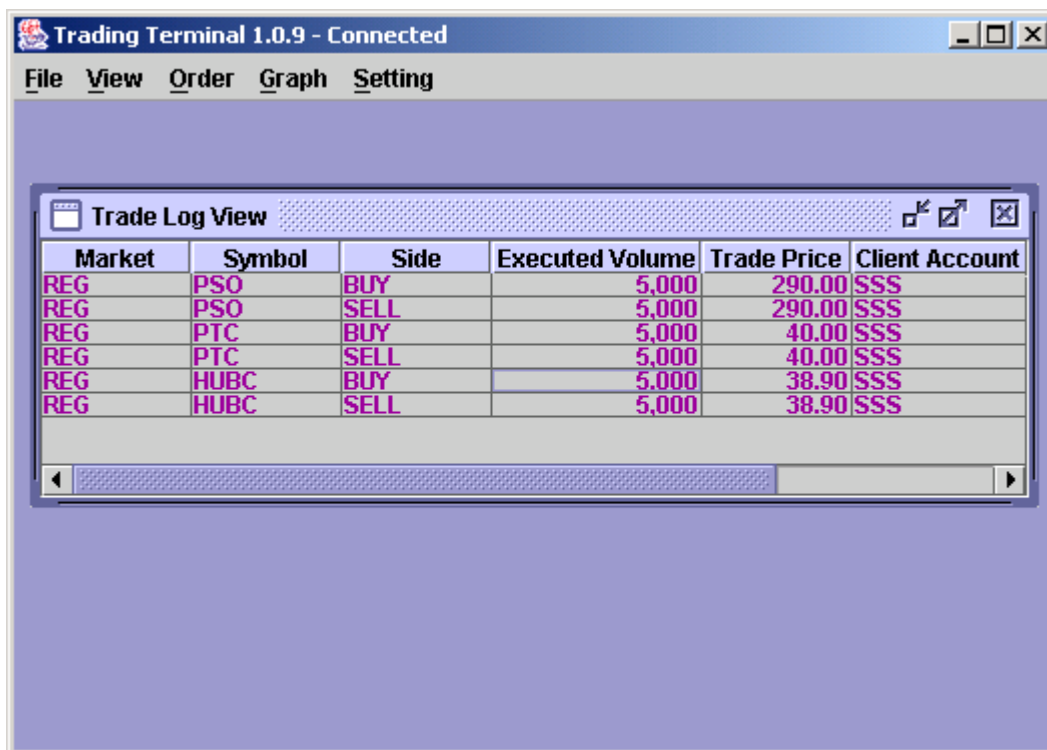
Figure 21: Outstanding Orders Summary

3.6 Trading Menu

Trading Menu contains transaction views that show the currently executed trades of the user. Details and summary of these trades are shown in separate views. Delivery request screen facilitates the client to request share delivery of his/her purchases.

3.6.1 Transaction List (Ctrl + R)

Transaction List keeps record of all of the current day executed trades. On application start up, the view loads executed trades of the user for current day (if any). Later, whenever user's order gets traded, the view is updated to show a new entry for the trade. Buy and Sell trades appear in different color in the view and a trade log file is also generated which maintains a log of all of these trades and can be viewed from File menu (see section 3.3.1). Different customisation options can be selected from the popup menu that appears on right clicking the view.



Market	Symbol	Side	Executed Volume	Trade Price	Client Account
REG	PSO	BUY	5,000	290.00	SSS
REG	PSO	SELL	5,000	290.00	SSS
REG	PTC	BUY	5,000	40.00	SSS
REG	PTC	SELL	5,000	40.00	SSS
REG	HUBC	BUY	5,000	38.90	SSS
REG	HUBC	SELL	5,000	38.90	SSS

Figure 22: Transaction List

3.6.2 Transaction Summary (Ctrl + Y)

Transaction Summary shows a summary of all of the current day executed trades. All executed trades are shown in order of symbol and side (buy/sell) and at the end of each symbol a summary shows the total buy and sell traded volume and average price of these trades in that particular symbol. This summary can be viewed for a particular symbol or for all symbols (if no symbol is specified). Different customisation options can be selected from the popup menu that appears on right clicking the view.

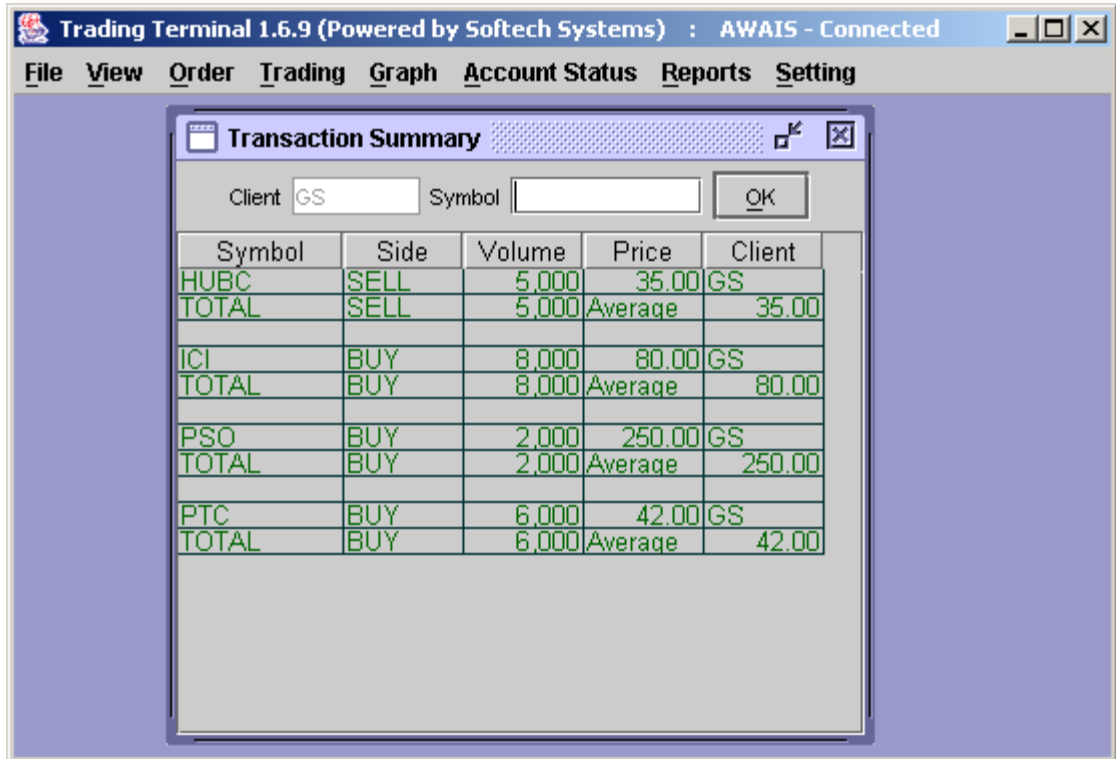


Figure 23: Transaction Summary

3.6.3 Delivery Request (Ctrl + Q)

Delivery Request screen facilitates the user to request share delivery of current day purchases. The user will request share delivery typically after closing the regular market and before the start of COT market although it can also be requested during the regular market. By default the purchases are included for current day COT in the COT market unless user makes a delivery request of shares, in that case those are not included for COT. On opening the delivery request screen, user's current day purchases are shown along with the volumes in each symbol and user can edit the delivery column to enter the delivery volume. Initially delivery volume is set to zero and COT volume is set to the total purchase volume. On editing the delivery volume, COT volume is adjusted accordingly for that symbol. On submitting the request, delivery requests are updated. Later on if user wants to clear all of the delivery requests he/she can use the Clear button to clear all delivery requests. User can refresh the screen by using the Refresh option from popup menu that appears on right clicking the screen. Different customisation options can also be selected from the popup menu.

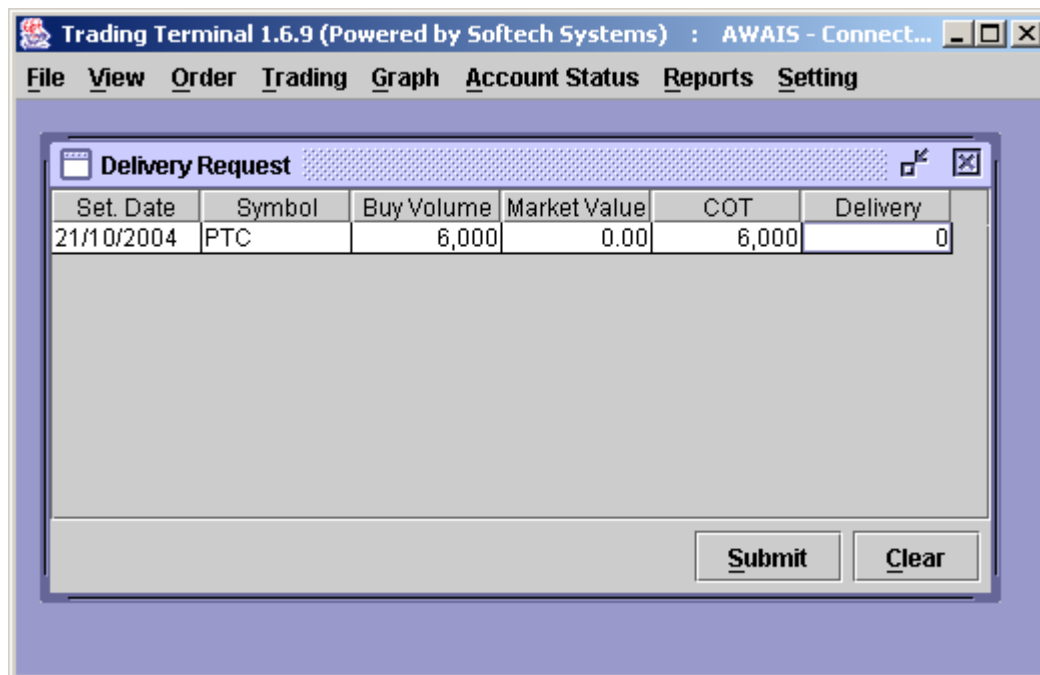


Figure 24: Delivery Request

3.7 Graph Menu

Trading Terminal provides an advanced and highly flexible charting module. Real time charting is available for exchange statistics and trades in a symbol. The components have the flexibility to be scaled according to user's requirements.

3.7.1 Stock Graph (Ctrl + K)

Stock Graph plots trade rates of a symbol (in a particular market) against time. User can enter the symbol and can select a particular market. On pressing **ok** button, the chart gets history data for the symbol on that day, plots it and after that starts plotting trades coming in real-time. So at any time, it shows complete history of the symbol on current day. Stock Graph also provides flexible scaling options.

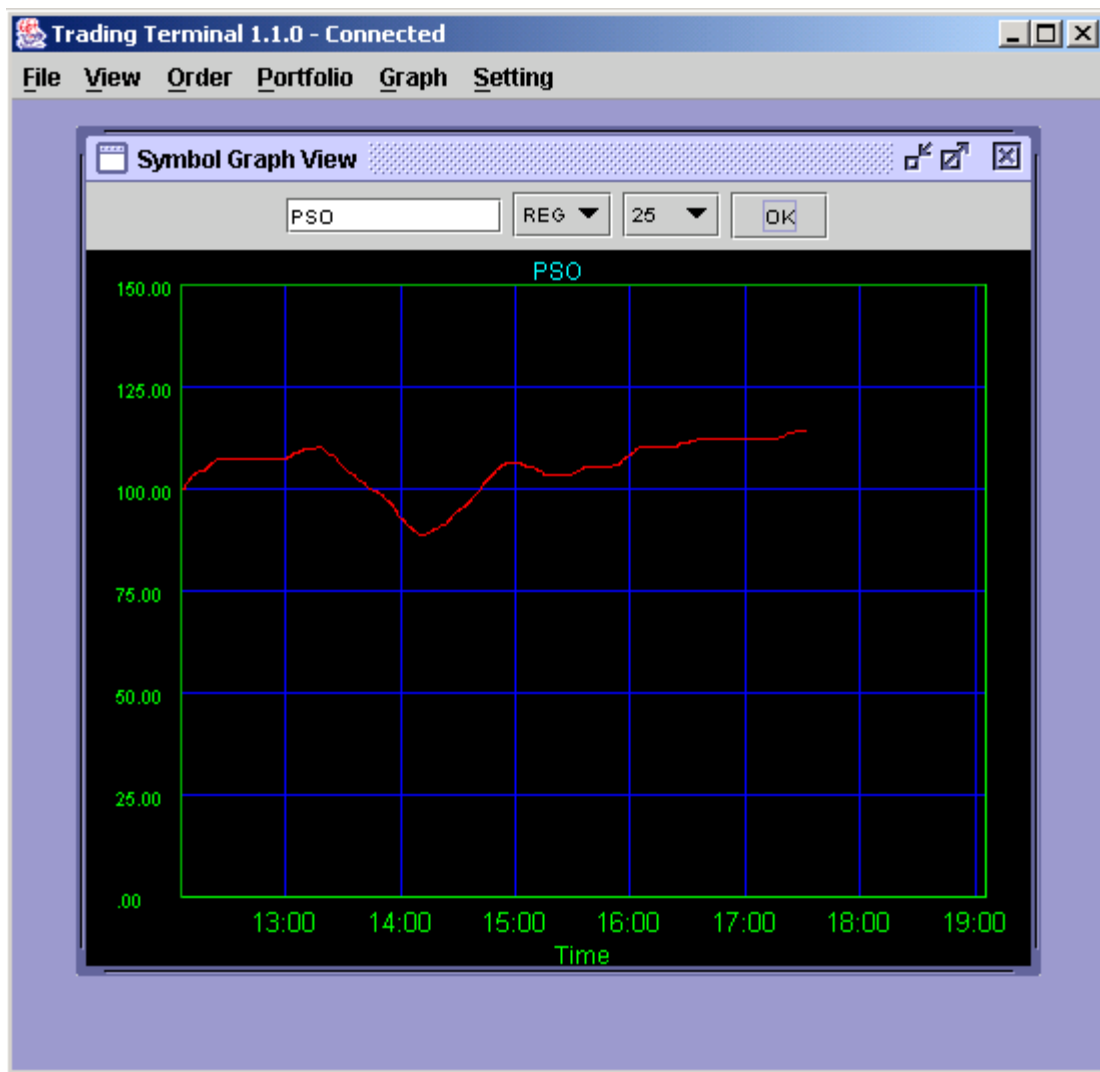


Figure 25: Stock Graph

3.7.2 Index Graph (Ctrl + I)

Index Graph plots stock exchange index value against time. On pressing **ok** button, the chart gets history data for the day, plots it and after that starts plotting the index in real-time. So at any time, graph shows the complete history of the exchange index on current day. Index Graph also provides flexible scaling options.

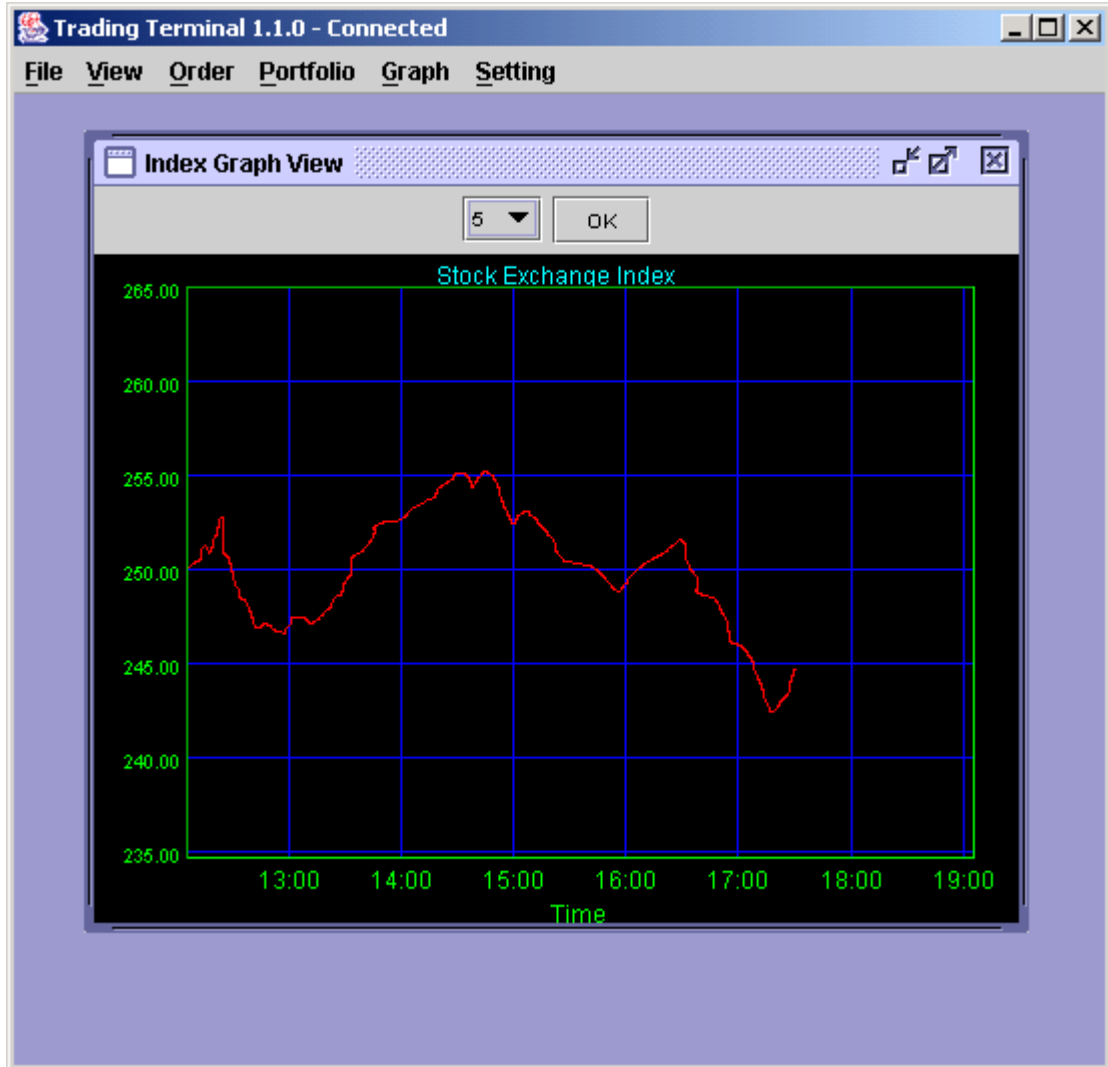


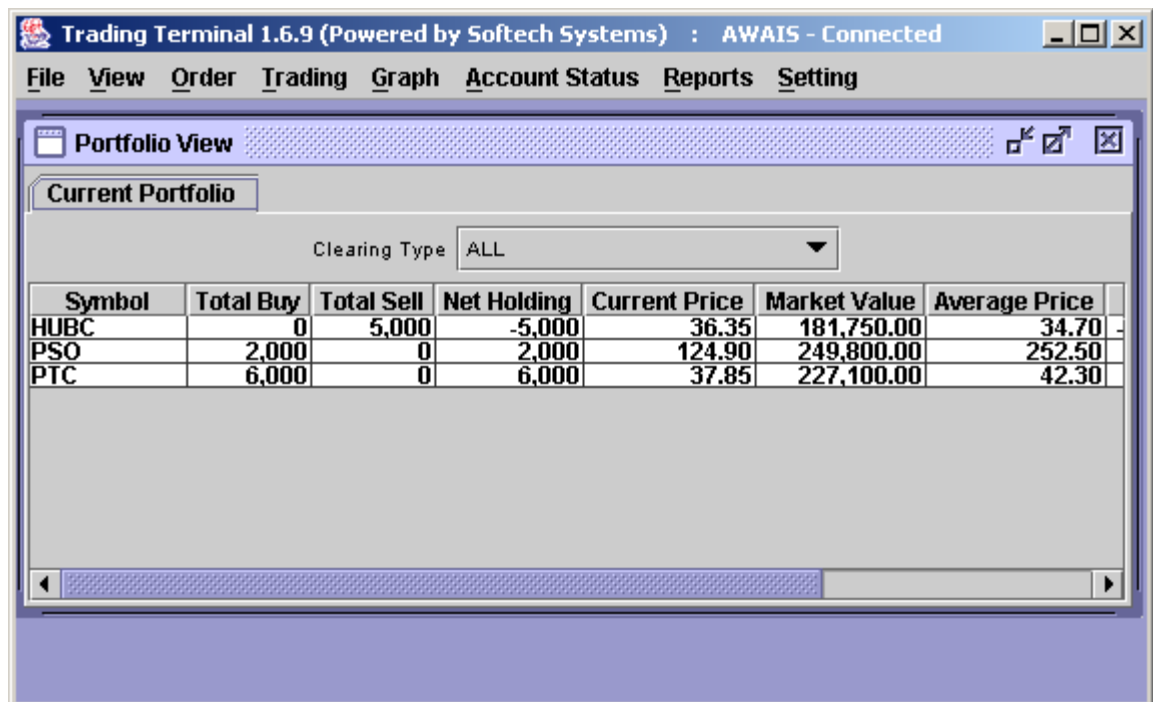
Figure 26: Index Graph

3.8 Account Status Menu

Current Portfolio provides a comprehensive view of client's holdings in current clearings. View is also facilitated with different customisation options like all other views.

3.8.1 Client Portfolio

Current Portfolio contains clearing type option through which user can select required clearing type. On selecting a particular clearing type, view shows client's outstanding positions for the selected clearing type. It gives a fair evaluation of the client's holdings with respect to the current market rate. It also shows some other statistics such as average cost, market value and un-realized gain/loss etc. Different customisation options can be selected from the popup menu that appears on right clicking the view.



Symbol	Total Buy	Total Sell	Net Holding	Current Price	Market Value	Average Price
HUBC	0	5,000	-5,000	36.35	181,750.00	34.70
PSO	2,000	0	2,000	124.90	249,800.00	252.50
PTC	6,000	0	6,000	37.85	227,100.00	42.30

Figure 27: Current Portfolio

3.9 Reports Menu

Trading Terminal provides a number of reports related to client’s account ledger, custody position and day trades. All of the reports can be viewed using Fetch button while these reports can be printed using print button provided in each report view.

3.9.1 Net Custody Position

Net Custody Position provides a detail of client’s net custody position for each symbol as on a particular date. The report can be requested for a particular date or for a particular symbol while custody position in all symbols is shown if symbol is not specified. The report shows the custody position in physical tradable and CDC tradable stocks and also shows a net custody position in each of regular, spot and forward clearing types for requested symbol(s).

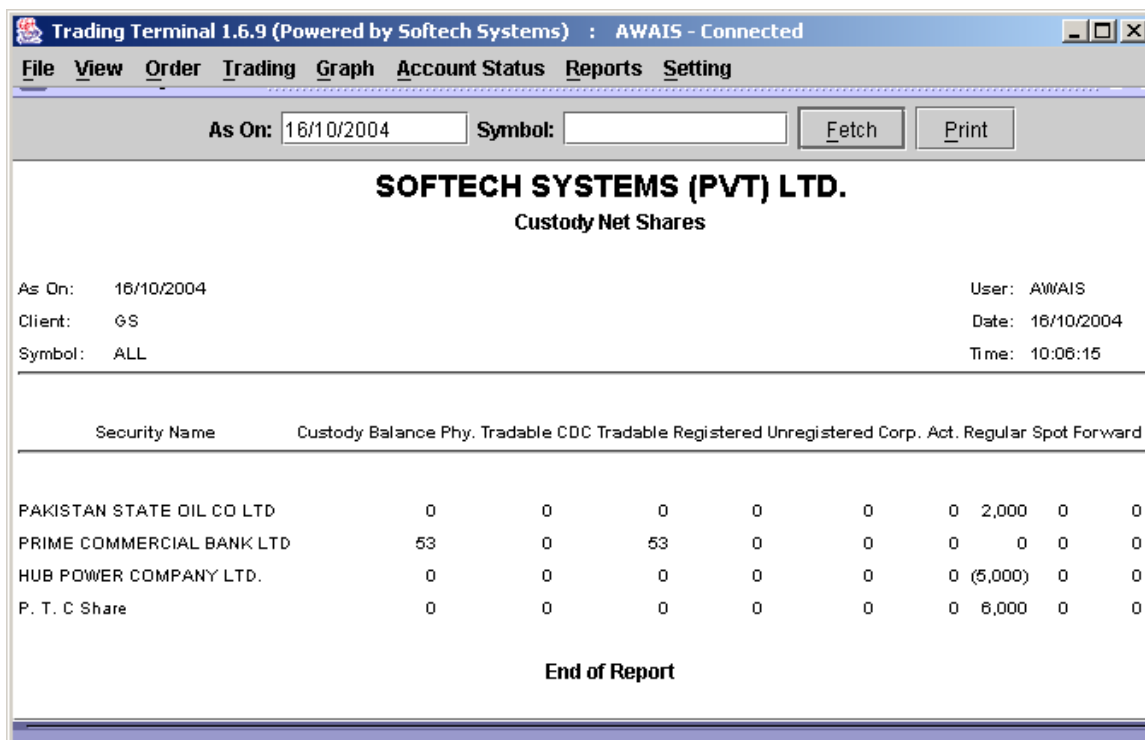


Figure 29: Net Custody Position

3.9.2 Daily Trade Confirmation

Daily Trade Confirmation shows symbol wise detail of client's trades in a specific period of time. Report can be requested for a specific period of time, for a particular symbol and also for a particular clearing type.

Trading Terminal 1.6.9 (Powered by Softech Systems) : AWAIS - Connected

File View Order Trading Graph Account Status Reports Setting

From Date: 16/10/2004 To Date: 16/10/2004 Symbol: Clearing Type: ALL

SOFTECH SYSTEMS (PVT) LTD.
Daily Trade Confirmation Report

From Trade Date: 16/10/2004 To Trade Date: 16/10/2004 User: AWAIS
 Client: GS Security: ALL Date: 16/10/2004
 Clearing Type: ALL Time: 10:10:12

Market	Trade Type	Trade #	Sett Date	Trade Date	Buy Qty	Sell Qty	Rate	Buy Amt	Sell Amt	Brok Amt	CVT Amt	WHT Amt
HUB POWER COMPANY LTD. HUBC PK0065001015												
REG	REGULAR TRADE	T104638821	16/10/2004	16/10/2004	5000	35.0000		175,000.00	1,500.0000			8
Security Total:					5000			175,000.00	1,500.0000			8

Figure 30: Daily Trade Confirmation

3.9.3 Periodic Trade Summary

Periodic Trade Summary shows symbol wise summary of client's trades in a particular period of time. Report can be requested for a particular period of time and for a particular clearing type. It shows the summary of client's trades in all symbols.

Trading Terminal 1.6.9 (Powered by Softech Systems) : AWAIS - Connected

File View Order Trading Graph Account Status Reports Setting

From Date: 16/10/2004 To Date: 16/10/2004 Clearing Type: ALL Fetch Pr

SOFTECH SYSTEMS (PVT) LTD.
Periodic Trade Summary Report

From Trade Date: 16/10/2004 To Trade Date: 16/10/2004 User: AWAIS
Client: GS Clearing Type: ALL Date: 16/10/2004 Time: 10:11:51

Security Name	Symbol	Buy Qty	Sell Qty	Net Qty	Buy Amt	Sell Amt	Brok Amt	CVT Amt	WHT Amt	Net A
HUB POWER COMPANY LTD.	HUBC	0	5000	-5000	0.00	175,000.00	1,500.0000	0.0000	8.7500	-173,491.
I.C.I. PAKISTAN LIMITED.	ICI	8000	8000	0	640,000.00	640,000.00	14,400.0000	64.0000	64.0000	14,528.
P. T. C Share	PTC	6000	0	6000	252,000.00	0.00	1,800.0000	25.2000	12.6000	253,837.
PAKISTAN STATE OIL CO LTD	PSO	2000	0	2000	500,000.00	0.00	5,000.0000	50.0000	25.0000	505,075.
Grand Total:		16000	13000	3000	1,392,000.00	815,000.00	22,700.0000	139.2000	110.3500	599,949.

Figure 31: Periodic Trade Summary

3.10 Setting Menu

Setting Menu provides some other useful options like change password, price alert settings and company symbols listing.

3.10.1 Change Password (Ctrl + P)

This option is used if user wants to change his/her password. Password can be changed at any time while using the application and after successful change new password becomes effective immediately.

To change password,

Enter old password in the **Old Password** field.

Enter new password in the **New Password** field.

Retype new password in the **Confirm Password** field.

Press the ENTER key or click **OK** button.

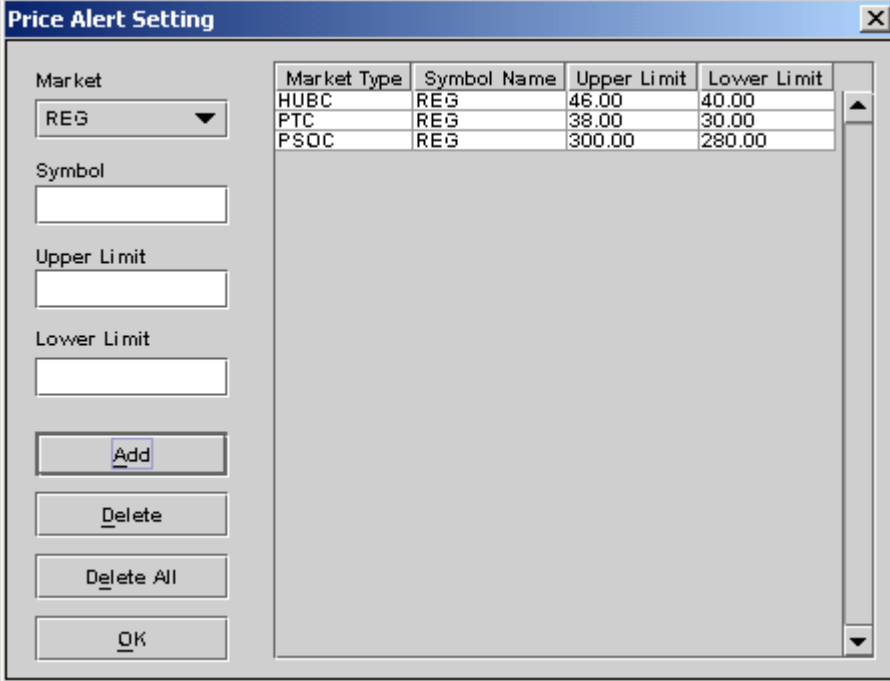
New Password and Confirm Password fields are matched and old password is also verified. New password becomes effective immediately if password has been changed successfully otherwise appropriate error messages is returned.



Figure 32: Change Password

3.10.2 Price Alerts (Ctrl + A)

Trading Terminal provides price alerts on prices of different symbols. Whenever the price of a certain symbol crosses the upper or lower limit, price alert (see section 3.4.6) is displayed on top of all other views showing the trade price for the symbol. Price Alerts dialog can be used to specify the upper and lower limit on prices of symbols crossing which user requires the price alert to appear. Here the user selects a particular market, enters the symbol for which he/she requires the price alert and lower and upper limits crossing which alert view should appear.



The Price Alert Setting dialog box features a 'Market' dropdown menu set to 'REG'. Below it are input fields for 'Symbol', 'Upper Limit', and 'Lower Limit'. A table on the right lists existing alerts with columns for 'Market Type', 'Symbol Name', 'Upper Limit', and 'Lower Limit'. The table contains three entries: HUBC (Upper: 46.00, Lower: 40.00), PTC (Upper: 38.00, Lower: 30.00), and PSOC (Upper: 300.00, Lower: 280.00). At the bottom are buttons for 'Add', 'Delete', 'Delete All', and 'OK'.

Market Type	Symbol Name	Upper Limit	Lower Limit
HUBC	REG	46.00	40.00
PTC	REG	38.00	30.00
PSOC	REG	300.00	280.00

Figure 33: Price Alert Settings

3.10.3 Symbol Listing (F3)

Symbol Listing provides the list of all valid symbols used and recognized by the application along with full company names. This view can be used to verify and/or find out the symbol for a company name. This view can also be invoked directly from the symbol list customisation dialog (see section 3.11.1) available for different views to select symbols.

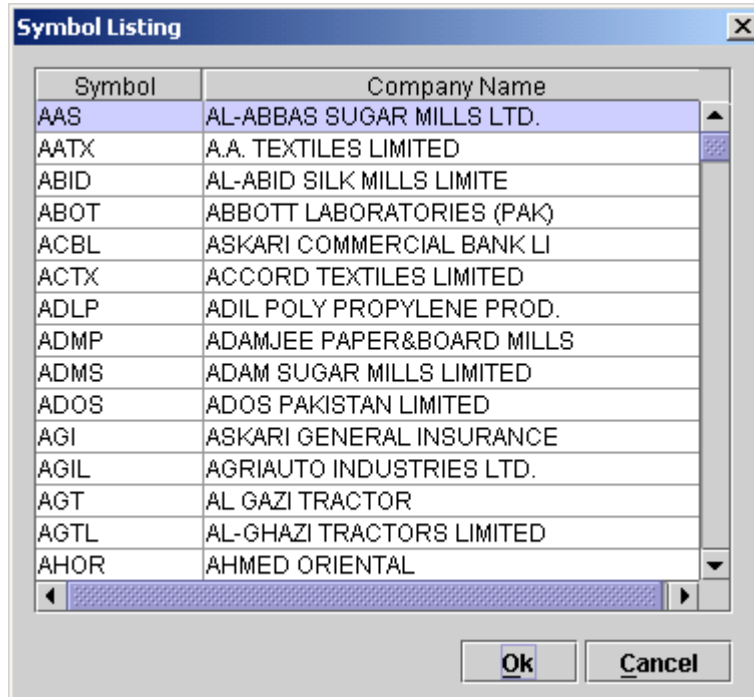


Figure 34: Symbol Listing

3.11 Customizing the application

Similar types of customisation options are available for almost all of the views. These customisations are applied to the view immediately after closing the customisation dialog. Moreover the customisation settings are saved on application exit and are reloaded when application is started next time. These customisation dialogs can be made to appear by selecting corresponding option from the popup menu appearing on right clicking the view to which these settings are to be applied.

3.11.1 Color Selection

Views provide flexible color setting options. So user can select specific colors for view background, view foreground, view header background, view header foreground, view grid lines etc. and these color settings are applied to the view immediately after closing the color dialog. Default option reverts the current color settings to default settings.



Figure 37: Color Selection

3.11.2 Font Selection

Views also provide flexible font settings that can be changed through Font dialog. Here user can select a particular font, font size and different font attributes and these settings are applied to the whole text appearing in the main window of the view.

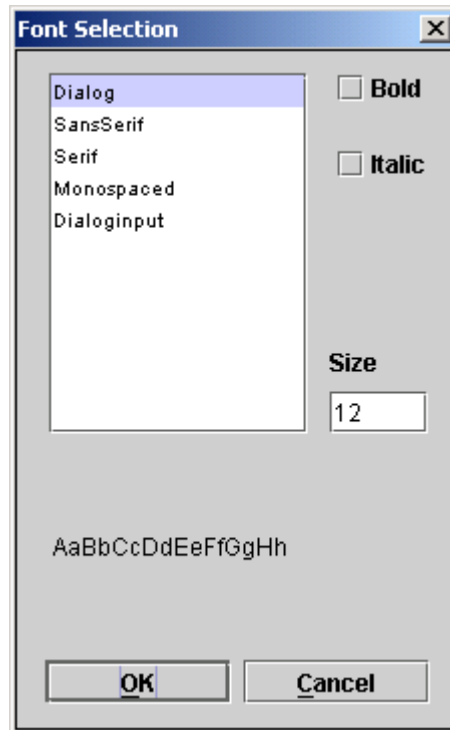


Figure 38: Font Selection